

Line-Mass Design

&

Line

Creative Design Types

Design

Creative Line Design

Creative Line Design

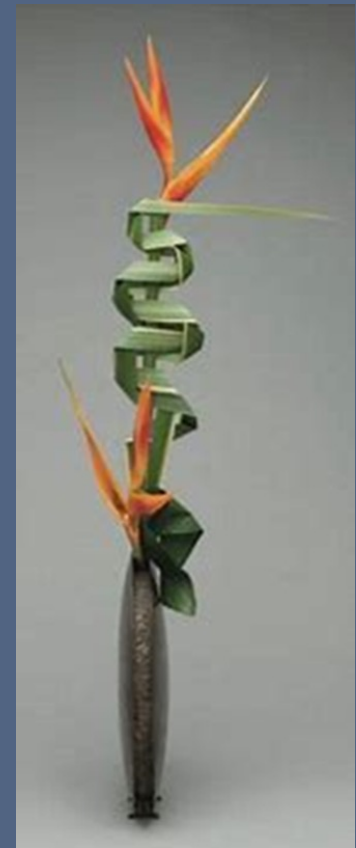
“A Creative Design where line is dominant with a minimum of plant material and other optional components.”

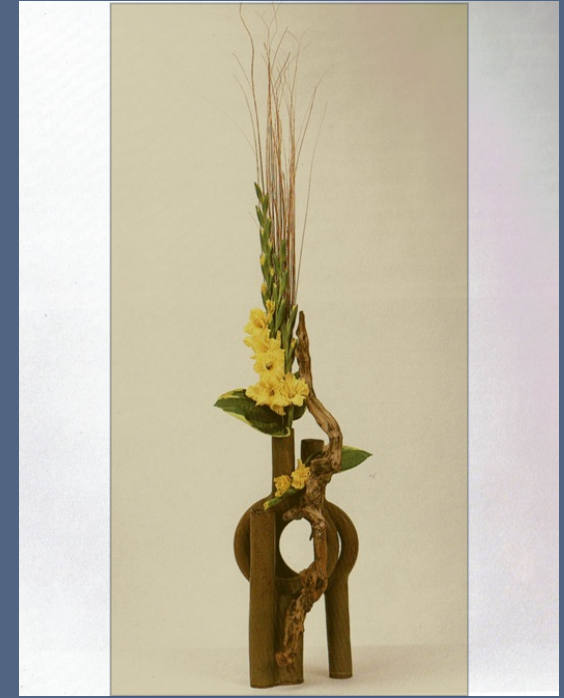
- “The line may be straight, curved or a combination.”
- “There may be one or more points of emergence and focal areas.”

Creative Line Design

- Minimal components.
- May incorporate:
 - Abstraction
 - Multiple interest areas (should not be equidistant).
 - Multiple points of emergence
 - Non-plant material
- Emphasis on dynamic balance.
- Line may be straight, curved, zig-zag or a combination thereof, and can be oriented in any direction

Vertical Line Designs





- A tall slender design can be lost in a large frame of reference like a provided white panel
- When showing against a wide background in a show consider using some fabric on the empty space or behind the design

Horizontal Line Designs



Horizontal Line Designs



Diagonal Line Designs



Other Line Designs



Oblique

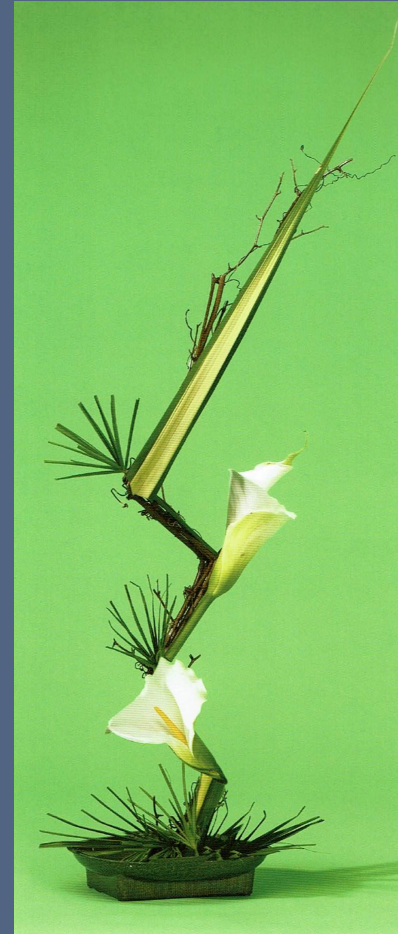


Curved

Other Line Designs



Zig-zag



Other Line Designs



Combination



Irregular

Creative Line Mass Design

Creative Line Mass Design

“A Creative Design similar to a Creative Line Design except additional plant material and/or other components are included to add strength and depth to the design.”

Line Mass Designs



Line Mass Designs



Line Mass Designs



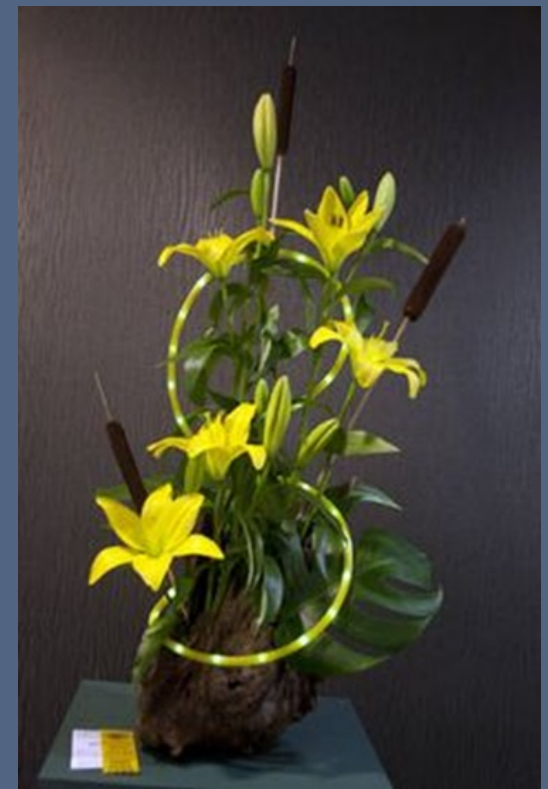
Creative Mass Design

Creative Mass Design

“A Creative Design emphasizing a greater proportion of plant material and components other than space.”

- The silhouette of the design is visually closed and rhythm contained within.
- Open spaces may be incorporated within the closed silhouette.

Creative Mass Designs



Creative Mass Designs

